

Wind speed pressure temp.sensor

Model ES-WT286



Introduction

ES-WT286 wind speed, wind pressure and temperature sensor is designed for pipeline wind speed measurement. The independently developed high-precision wind speed measurement unit is sensitive and can quickly and accurately measure small wind speeds. It has good stability, small drift and high precision. The transmitter can also calculate the real-time air volume value according to the set measured pipeline cross-sectional area. The pipeline installation method is convenient for on-site installation. The product adopts anti-interference circuit design and DC 10-30V power supply is more convenient to use.

Main features

- Wind speed, air volume, wind pressure, and temperature are all measured
- Applicable to ventilation ducts and oil fume ducts
- High-precision wind speed measurement unit, low starting wind speed, sensitive response
- Full-range secondary calibration method, good linearity, high accuracy
- Open-hole flange installation, using high-quality silicone sealing ring

Compliance

The electromagnetic compatibility in accordance with the following applicable directives:

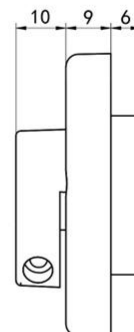
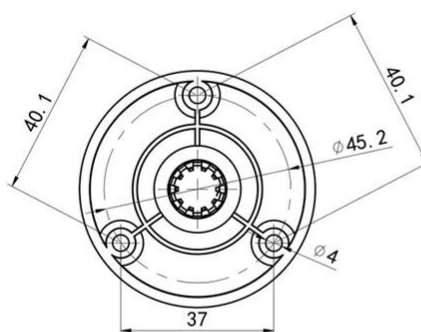
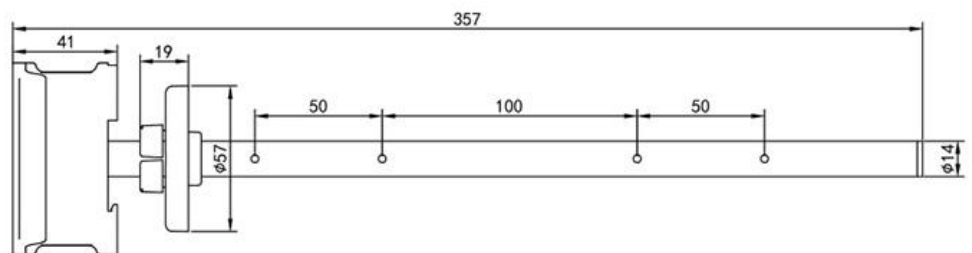
EMC 2014/30/EU
Electromagnetic Compatibility
EMC 2014/35/EU
Electromagnetic Compatibility

Application

The civil air defense wind volume measuring instrument is a device used to measure the air velocity and wind volume at the entrance and exit of civil air defense projects.

Dimension

Unit:mm



Specification

Equipment power supply	10-30V DC
Measurement medium	Air, nitrogen, oil fume exhaust, etc.
Accuracy	±2%FS
Working environment	-40°C~+80°C
Wind speed range	≤95%RH
Wind pressure range	0~30m/s
Wind speed display resolution	0-500Pa
Protection level	0.1m/s
Long-term stability	IP65
Output signal	≤0.1m/s/year
Parameter setting	485 (Modbus-RTU protocol)

Order guide

ES-WT286	wind speed, wind pressure and temperature sensor		
	CODE	Pipeline	
	DN315	Suitable for pipe DN315mm	
	DN400	Suitable for pipe DN400mm	
	DN440	Suitable for pipe DN440mm	
	DN560	Suitable for pipe DN560mm	
	DN660	Suitable for pipe DN660mm	
		CODE	Signal output
		1	RS485
ES-WT286	DN315	1	Order example