

Ultrasonic anemometer

Model ES-W3056



Main features

- Maintenance free, long service life
- No moving parts, no wear
- Engineering plastic shell, lighter
- Adopt ultrasonic probe reflection type, with more compact structure
- Adopt acoustic wave phase compensation technology, with higher accuracy

Compliance

The electromagnetic compatibility in accordance with the following applicable directives:

LVD 2014/35/EU Low Voltage

EMC 2014/30/EU

Electromagnetic Compatibility

EMC 2014/35/EU

Electromagnetic Compatibility

Introduction

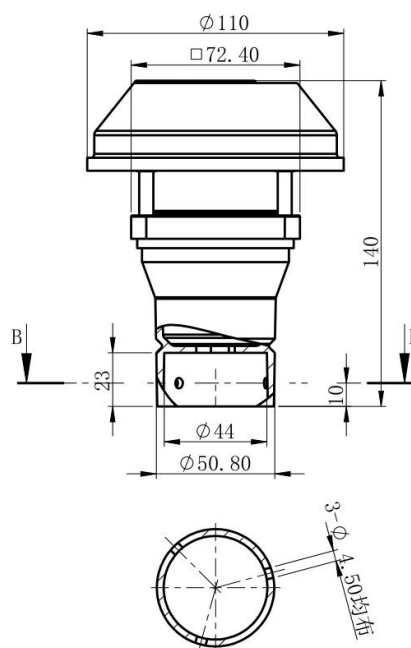
ES-W3056 ultrasonic anemometer is a kind of instrument which can measure the wind speed, wind direction and acoustic temperature by using the time difference of ultrasonic propagation in the air. Compact space structure makes the volume smaller and the appearance more beautiful; all aluminum alloy shell makes the weight lighter; integral heating can work normally in cold and frozen weather. It is recommended for wind power, tunnels, high-altitude buildings and other fields.

Application

It is mainly used in highway, meteorology, drilling platform, waterway, port, wind power generation, ship, automatic weather station and other industries.

Dimension

Unit:mm



Specification

Wind speed	Range	0 - 70m/s or customized
	Accuracy	±5%
	Resolution	0.1m/s
Wing direction	Measure Range	0-359°
	Accuracy	±3°
	Resolution	1°
Digital output	Interface	RS232/RS485/SDI-12
	Baud rate	4800-19200
	Protocol	ModBus/NMEA 0183
Protection grade	IP65	
Operating Temp.	-20°C ~+60°C	
Humidity	0 - 100%	
Power supply	DC 5~30V DC	
Consumption	0.3W	
Size/Weight	Φ110×140mm / 0.18kg	
Body material	ASA	

Order guide

ES-W3056	Ultrasonic Wind Speed & Direction Sensor		
	CODE	Function type	
	A	Wind speed + wind direction	
		CODE	Signal output
		1	RS232
		2	RS485
		3	SDI-12
ES-W3056	A	1	Order example