

Ultrasonic anemometer

Model ES-W302



Introduction

ES-W302 anemometer uses ultrasonic resonance to measure wind speed and direction. The anemometer is very small, weighs only 89g and has a diameter of only 66mm. It uses a low-power chip inside, with a power consumption of only 0.08W at low power consumption. The shell of the ultrasonic anemometer is made of ASA material, which is corrosion-resistant and does not change color. The protection level can be increased to IP68, which is suitable for all-weather work in various geographical and natural environments.

ES-W302 ultrasonic anemometer is small, easy to install and simple to use, meeting the personalized needs of the majority of users.

Main features

- Maintenance-free, long service life
- No moving parts, zero wear
- Using ultrasonic probe reflection type, more compact structure
- Using sound wave phase compensation technology, higher accuracy

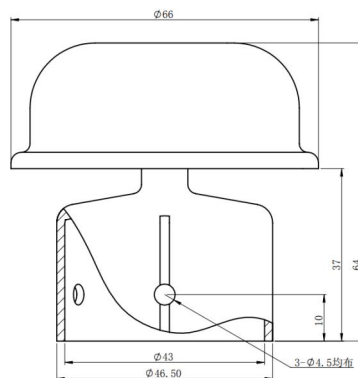
Compliance

CE certification of EU
The electromagnetic compatibility in accordance with the following applicable directives:
LVD 2014/35/EU Low Voltage
EMC 2014/30/EU
Electromagnetic Compatibility
EMC 2014/35/EU
Electromagnetic Compatibility

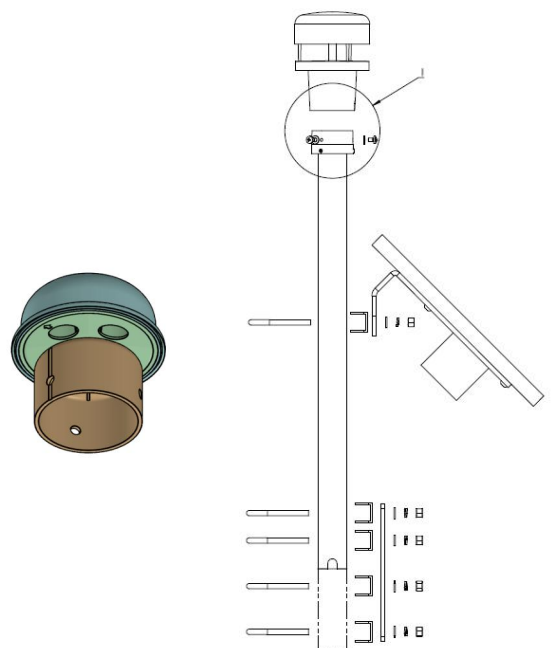
Application

It is mainly used in industries such as highways, meteorology, drilling platforms, waterways, ports, wind power generation, ships and automatic weather stations.

Dimension



Unit:mm



Specification

Wind speed	Range	0 - 60m/s (customizable 0 - 75m/s)
	Accuracy	±4%
	Resolution	0.1m/s
	Unit	m/s,km/h,knots,mph,ft/min (selectable)
Wind direction	Measure Range	0-359°
	Accuracy	±4°
	Resolution	1°
Digital output	Interface	RS232/RS485/SDI-12
	Baud rate	9600(default),4800-19200(configurable)
	Protocol	ModBus-RTU/NMEA 0183/SDI-12
Bluetooth output	BLE Bluetooth 5.1 (optional)	
Protection grade	IP65 default (up to IP68 customizable)	
Operating Temp.	-40°C ~+70°C	
Humidity	0 - 100%	
Power supply	DC 5~12V DC	
Consumption	0.02W	
Size/Weight	Φ66×64mm	
Body material	ASA	

Order guide

ES-W302	Ultrasonic Wind Speed & Direction Sensor		
	CODE	Function type	
	A	Wind speed + wind direction	
	C	Customized functions	
		CODE	Signal output
		1	RS485
		2	RS232
		3	SDI-12
		4	BLE Bluetooth 5.1 (optional)
ES-W302	A	1	Order example

