

Visibility meter

Model ES-V226VP



Main features

- Especially built for Traffic Applications
- 10m to 10km measurement range(can extend to 100km)
- Ideal for road long distance visibility data collection
- Accurate and traceable measurement
- High mechanical strength
- Low maintenance requirement
- Simple Installation and Maintenance
- Compact forward design
- Not affected by local lights
- Easily installed by one person
- Hood heating for use in extreme environments

Compliance

- Highways, ships
- Drilling platforms
- Waterways, ports
- Wind power generation
- Automatic weather stations

Introduction

ES-V226VP series is a professional meteorological visibility meter.

It uses a cast aluminum body, which is both sturdy and lightweight, and can be installed along highways. The appearance is extremely small and portable, and can be installed on high-speed moving vehicles.

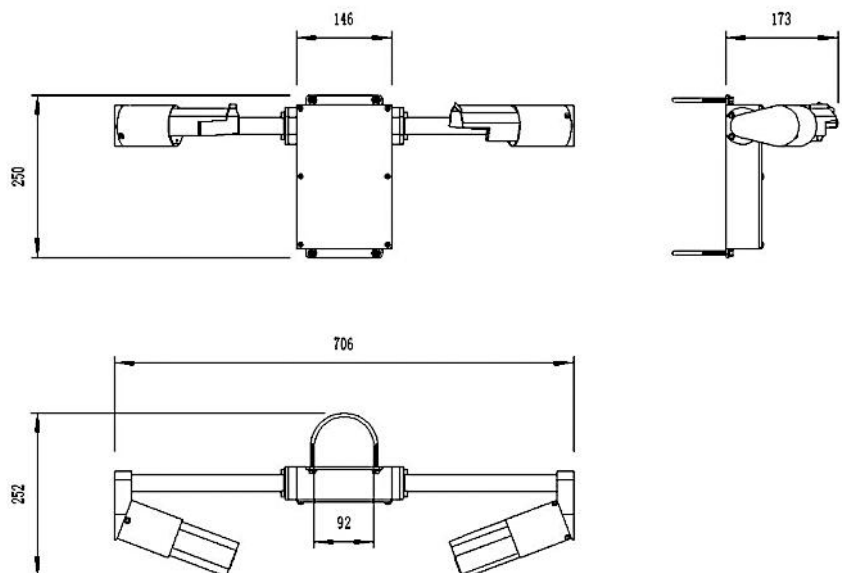
It can also do a stainless steel body, which is completely suitable for use in high-salinity and humid environments such as ships, drilling platforms and coastal areas. In addition, in order to adapt to the use in high-risk flammable gas environments, this series has also derived an explosion-proof visibility meters.

ES-V226VP series visibility meter can add a weather phenomenon detection module, which can identify precipitation and snowfall types, and distinguish between weather phenomena such as drizzle, light rain, moderate rain and heavy rain. Optional modules can also be used to measure the intensity and accumulation of precipitation and snowfall, so as to achieve one specialty and multiple functions.

They can be powered by a DC12-30V power supply. The optical lens of the instrument has an automatic heating control module and can work normally even in extreme environments such as severe cold.

Dimension

Unit:mm



Specification

Measuring range	10m-10km (expandable to 30km; 50km; 80km)
Measurement accuracy	±5% (10m-2km); ±10% (2km-10km)
Weather phenomenon module (optional A)	Can identify four different precipitation types: drizzle, light rain, moderate rain, heavy rain Can identify rain, snow, mist (smoke), thick fog (smoke) and other state types
Weather phenomenon module (optional B)	It can identify the parameters in option A and measure the intensity of precipitation and snowfall: Measurement range: 0-200mm/h Resolution: 0.1mm (rainfall); 1mm (snowfall)
Serial output	RS485/RS232
Baud rate	4800-19200
Protocol	ModBus and ASCII
Analog output (optional)	One channel: Voltage output: 0-5/10V; Current output: 4-20 mA
Operating temperature	-40°C to +50°C
Operating humidity	0 - 100% RH
Protection rating	IP65
Power supply	DC12-24V
Power consumption	≤6W (heating state)
Material	Cast aluminum, stainless steel
Weight	Aluminum alloy ≤2.8kg; Stainless steel ≤6.4kg
Dimensions	706mm×250mm×173mm

Order guide

ES-V226	Visibility Sensor			
	CODE	Function type		
	VP	Visibility		
	VPO	Visibility, rainfall, snow		
		CODE	Signal output	
		1	RS485	
		2	RS232	
			A	Stainless steel body
			AD	Explosion-proof stainless steel body
			C	Cast aluminum body
ES-V226	VP	1	C	Order example

