

Piezoelectric rainfall detector

Model ES-R226H



Main features

- Piezoelectric sensing technology, measuring the intensity of rainfall
- More sensitive than traditional mechanical type
- Optional internal heating device to prevent icing
- No moving parts, maintenance-free
- Small size, low energy consumption.

Compliance

CE certification of EU
The electromagnetic compatibility in accordance with the following applicable directives:
LVD 2014/35/EU Low Voltage
EMC 2014/30/EU
Electromagnetic Compatibility
EMC 2014/35/EU
Electromagnetic Compatibility

Introduction

The ES-R226H adopts an advanced small piezoelectric sensor module, and uses the technology of the voltage effect generated by raindrops on the piezoelectric module to measure the intensity of rainfall.

The ES-R226H piezoelectric rain detector is more sensitive and quicker than the traditional mechanical rain detection method to detect the start and end time of rainfall, and there is no need to worry about moving objects such as leaves and branches swinging above the detector to affect the rainfall detection. Optional heating device inside to prevent freezing.

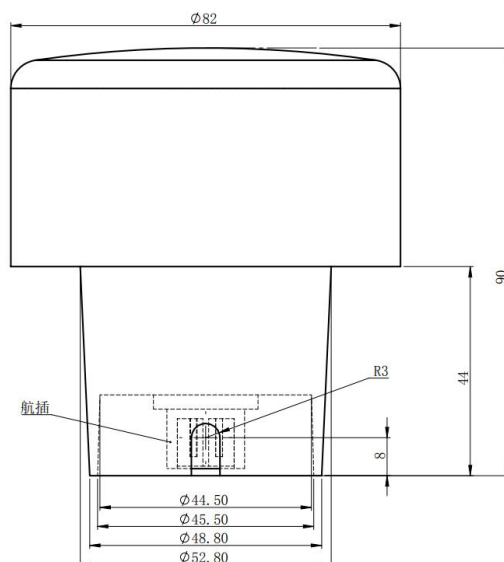
There are no moving parts inside the ES-R226H detector, which is maintenance-free, small in size and low in energy consumption.

Application

- Weather station Rainfall detection
- Smart city system
- River flood control monitoring

Dimension

Unit:mm



Specification

Measurement Type	Rain
Measuring range	0-200mm/h
Measurement accuracy	less than 10%
Particle size range (raindrop size)	0.5-5.0mm
Rainfall resolution	0.1mm
Sampling frequency	1 second
Communication interface	RS485, RS232, SDI-12
Communication protocol	ModBus, ASCII
Power and power consumption	7-24VDC; 0.16W @12V (without heating)
Working temperature	-30°C - +60°C
Working humidity	0-100%
Dimensions	Ø82 * 90mm
Material	ASA
Weight	0.15kg

Order guide

ES-R226H	Piezoelectric Rainfall Detector		
	CODE	Heating	
	W	Automatic heating	
	N	No heating function	
		CODE	Signal output
		1	RS485
		2	RS232
		3	SDI-12
ES-R226H	N	1	Order example